

Serving communities around our Fremont and San Leandro medical facilities.

## Coming together to improve community health

In 2021, Kaiser Permanente continued to respond urgently to the staggering health and economic toll of the COVID-19 pandemic on the communities we serve.

Together with our partners, we addressed the most critical health needs in our community: COVID-19 prevention and vaccination; food, housing, and economic security; and mental health and wellness. We prioritized support of low-income communities and communities of color, who continue to bear an unequal burden from the pandemic.

## Protecting hard-hit communities

COVID-19 vaccines became widely available in 2021, but some communities hard hit by the pandemic faced barriers to getting vaccinated. Kaiser Permanente collaborated with public health departments, community health centers, and other trusted community and faith partners to address vaccine concerns and make it easy for people to get vaccinated.

Funding from Kaiser Permanente supported additional staffing for Tiburcio Vasquez Health Center to host 205 COVID-19 vaccine clinics in partnership with academic institutions and community-based organizations. The clinics provided nearly 24,000 COVID-19 vaccinations to Asian, Black, and Latinx individuals and families in the Hayward and Ashland areas of Alameda County.





## Providing critical support for social health needs

Good health requires more than high-quality medical care. Social health factors such as having enough healthy food and a safe place to live are also essential. As the economic fallout from the COVID-19 pandemic wears on, Kaiser Permanente is intensifying efforts to meet the critical social health needs of our community.

One example is our support of the Fremont Family Resource Center's Connection to Care program, which provides outreach and case management for people experiencing homelessness or at risk of becoming homeless. The program helped 36 individuals to get the resources they need and submit the appropriate paperwork to assist them in getting stable housing through Alameda County.

## Improving access to mental health care

Against the backdrop of a national shortage of mental health care professionals, the COVID-19 pandemic has exacerbated mental health needs in the community. In response, Kaiser Permanente is using its resources, reach, and partnerships to improve access to community mental health services and expand the mental health workforce pipeline.

Our funding to Kidango, a nonprofit child development agency, helped provide Early Childhood Mental Health Consultation to more than 2,000 low-income households with children 0 to 5 years of age at child development centers in Fremont, Hayward, Newark, San Leandro, San Lorenzo, and Union City. This enables teaching teams to better respond to the needs of children and families affected by toxic stress and traumatic events.



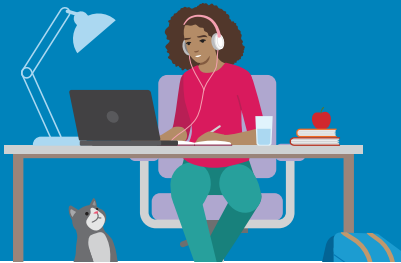
# By the numbers

\$55M

2021 Greater Southern Alameda Area  
Total Community Investment

24K

Youth and adults reached  
through Educational Theatre



8K

People received  
Medical Financial Assistance

\$3M

In grants, donations,  
and direct support

\$47M

Subsidized health  
care and coverage



78

Medical residents trained  
in our Graduate Medical  
Education programs



## Community health priorities

As part of our commitment to improve health and health equity in our community, every 3 years we conduct a rigorous and collaborative community health needs assessment. For 2021, Kaiser Permanente identified the following significant health priorities in our Central Valley communities.

### Access to Care and Coverage

High quality, culturally, and linguistically appropriate health services in coordinated delivery systems.

### Economic Security

All community members are economically secure in order to thrive.

### Mental Health and Wellness

Social and emotional health and well-being and access to high-quality behavioral health care services when needed.