

2021 Community Health Snapshot

Serving communities around our Manteca, Modesto, Stockton, and Tracy medical facilities.

Coming together to improve community health

In 2021, Kaiser Permanente continued to respond urgently to the staggering health and economic toll of the COVID-19 pandemic on the communities we serve.

Together with our partners, we addressed the most critical health needs in our community: COVID-19 prevention and vaccination; food, housing, and economic security; and mental health and wellness. Our efforts prioritized underserved communities and communities of color, who continue to bear an unequal burden from the pandemic.

Protecting hard-hit communities

COVID-19 vaccines became widely available in 2021, but some communities hard hit by the pandemic faced barriers to getting vaccinated. Kaiser Permanente collaborated with public health departments, community health centers, and other trusted community and faith partners to address vaccine concerns and make it easy for people to get vaccinated.

Some examples of this include our \$85,000 grant to Stanislaus Multi-Cultural Health Coalition, which supported vaccine education and outreach to 1,825 low-income individuals in West Modesto. The coalition partnered with vaccination sites that provided 1,150 vaccinations. In Stockton, our \$75,000 grant to Family Resource and Referral provided translation and technology support that helped 67,000 people secure vaccine appointments on [MyTurn.ca.gov](https://www.myturn.ca.gov).





Helping local economies to thrive

A good job with a steady paycheck is foundational to good physical and mental health. Together with our community partners, Kaiser Permanente is expanding economic opportunity in communities that have endured decades of underinvestment.

Our 2-year \$100,000 grant to the Stanislaus Business Alliance supports VOLT ON THE GO, a program that provides accredited, mobile mechanical and electrical manufacturing training to residents of remote, underserved communities. The program is expected to train 100 individuals, resulting in full-time employment in well-paid, local manufacturing jobs. We also provided funding to the San Joaquin County Hispanic Chamber of Commerce to help connect 100 individuals to employers who assisted them with skill development needed for meaningful employment.

Improving access to mental health care

Against the backdrop of a national shortage of mental health care professionals, the COVID-19 pandemic has exacerbated mental health needs in the community. In response, Kaiser Permanente is using its resources, reach, and partnerships to improve access to community mental health services and expand the mental health workforce pipeline.

Our \$90,000 grant to Sierra Vista Child and Family Services provided direct mental and behavioral health services and referrals to 150 uninsured individuals in Stanislaus County. In San Joaquin County, our 2-year, \$100,000 grant to Sow A Seed Community Foundation supports mental health skill building and treatment referrals for youth in school and community center settings.



By the numbers

\$79M

2021 Central Valley
Total Community Investment

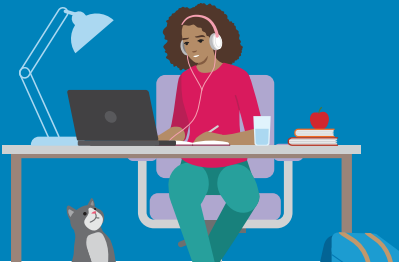


\$16M

In grants, donations,
and direct support

21K

Youth and adults reached
through Educational Theatre



16K

People received
Medical Financial Assistance

\$58M

Subsidized health
care and coverage



38

Medical residents trained
in our Graduate Medical
Education programs





Community health priorities

As part of our commitment to improve health and health equity in our community, every 3 years we conduct a rigorous and collaborative community health needs assessment. For 2021, Kaiser Permanente identified the following significant health priorities in our Central Valley communities.

Access to Care and Coverage

High quality, culturally, and linguistically appropriate health services in coordinated delivery systems.

Healthy Eating Active Living

Opportunities to eat better and move more as part of daily life in order to prevent and reduce the impact of chronic conditions.

Economic Security

All community members are economically secure in order to thrive.

Mental Health and Wellness

Social and emotional health and well-being and access to high-quality behavioral health care services when needed.