

# Kaiser Permanente Central Valley 2022 Community Health Snapshot

Serving communities around our Manteca, Modesto, Stockton, and Tracy medical facilities.



## Improving the health of our communities

Our work is informed continually by a comprehensive assessment of community health needs, and our grantmaking focuses on making the greatest impact. We're proud to support local nonprofits and community partners meeting the critical health needs of underserved populations. Together, we're creating healthier and more equitable communities.

In 2022, Kaiser Permanente provided nearly \$15 million in charitable contributions to address community health priorities in our Central Valley service area. Read on for examples of our work.

### Supporting community mental health

Amid a national mental health professional shortage, we invested in expanding a diverse, well-trained, culturally responsive mental health workforce. We also focused on increasing access to mental health services for low-income and vulnerable populations.

One example is our support of NAMI (National Alliance on Mental Illness) Stanislaus in partnership with Stanislaus County Behavioral Health and its Prevention and Early Intervention program. Our grant supported a series of 50 presentations in Stanislaus County school districts to inform parents and school staff of available mental health services, resources, and support.

### Improving conditions for health and equity

Because good health begins where people live, we worked to improve factors affecting health in our communities, such as access to safe, stable housing and affordable nutritious food.

Our support of the Family Resource Center, which operates 2-1-1 San Joaquin, helped connect San Joaquin County residents to essential services and 570 health and human service organizations in the area. The most common referrals included requests for help with preventing homelessness, finding affordable housing, and locating a food pantry.

### Supporting economic opportunities to change lives

Financial health is fundamental to people's ability to maintain overall health. We supported organizations that work with underserved populations to promote college and career readiness, quality jobs, and diverse small business growth.

Our work to support college readiness included a grant to Improve Your Tomorrow to assist 370 young men of color from underserved communities to attend and graduate from college. Nine out of 10 participants go to college with support from the organization, which includes academic assistance, mentoring, college advising, college visits, and paid internships.

**\$82M**

2022 Central Valley  
Total Community Investment



**\$15M**

In grants and donations

**\$17M**

Medical financial  
assistance



**43**

Medical residents trained  
in our Graduate Medical  
Education programs



**\$60K**

In employee and corporate  
donations to nonprofits  
through KP Gives



## Community health priorities

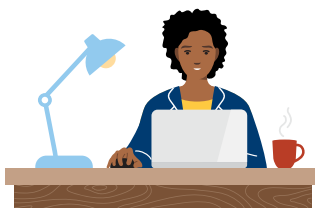
As part of our commitment to improve health and health equity in our community, every 3 years we conduct a rigorous and collaborative community health needs assessment. For 2022, Kaiser Permanente identified the following significant health priorities in our Central Valley communities.



**Mental and behavioral health**



**Access to care**



**Income and employment**