

Serving communities around our Roseville, Sacramento, and South Sacramento medical facilities.

Coming together to improve community health

In 2021, Kaiser Permanente continued to respond urgently to the staggering health and economic toll of the COVID-19 pandemic on the communities we serve.

Together with our partners, we addressed the most critical health needs in our community: COVID-19 prevention and vaccination; food, housing, and economic security; and mental health and wellness. Our efforts prioritized underserved communities and communities of color, who continue to bear an unequal burden from the pandemic.

Protecting hard-hit communities

COVID-19 vaccines became widely available in 2021, but some communities hard hit by the pandemic faced barriers to getting vaccinated. Kaiser Permanente collaborated with public health departments, community health centers, and other trusted community and faith partners to address vaccine concerns and make it easy for people to get vaccinated.

One example of this work is our funding of the Sacramento Area Vaccine Equity (SAVE) Coalition, which promoted vaccine outreach and education to more than 30,000 residents in South Sacramento. The coalition prioritized outreach to communities of color in under-vaccinated ZIP codes. More than 20 community organizations coordinated language-specific outreach and education and ultimately vaccinated 17,500 community members at 22 vaccine clinics.





Helping local economies to thrive

A good job with a steady paycheck is foundational to good physical and mental health. Together with our community partners, Kaiser Permanente is expanding economic opportunity in communities that have endured decades of underinvestment.

Kaiser Permanente provided a grant to Women's Empowerment to work with women experiencing homelessness in Sacramento, equipping them with tools to secure a stable job, a livable wage, and long-term housing. In 2021, the program served 478 women and connected them to education, job training, and employment opportunities. Kaiser Permanente also funded Juma Ventures, which provided job training for 120 youth and young adults who are overcoming barriers to employment in Sacramento County.

Improving access to mental health care

Against the backdrop of a national shortage of mental health care professionals, the COVID-19 pandemic has exacerbated mental health needs in the community. In response, Kaiser Permanente is using its resources, reach, and partnerships to improve access to community mental health services and expand the mental health workforce pipeline.

Our efforts included support for the Roseville Joint Union High School District to expand mental health care for students and trauma-informed training for staff at their on-site wellness centers. The centers serve thousands of teens, with a focus on students at high-risk for mental health issues. Kaiser Permanente also placed mental health residents at Roseville high schools to provide additional support for staff and students.



By the numbers

\$303M

2021 Greater Sacramento
Total Community Investment

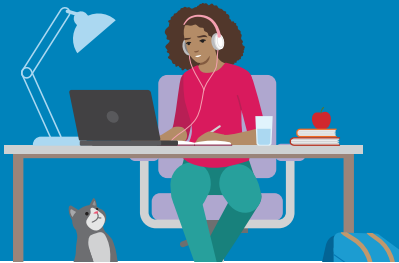


\$6M

In grants, donations,
and direct support

28K

Youth and adults reached
through Educational Theatre



19K

People received
Medical Financial Assistance

\$281M

Subsidized health
care and coverage



598

Medical residents trained
in our Graduate Medical
Education programs





Community health priorities

As part of our commitment to improve health and health equity in our community, every 3 years we conduct a rigorous and collaborative community health needs assessment. For 2021, Kaiser Permanente identified the following significant health priorities in our Greater Sacramento communities.

Access to Care and Coverage

High quality, culturally, and linguistically appropriate health services in coordinated delivery systems.

Economic Security

All community members are economically secure in order to thrive.

Community and Family Safety

Safe environments and support for individuals who are victims or at-risk of violence.

Mental Health and Wellness

Social and emotional health and well-being and access to high-quality behavioral health care services when needed.